

The logo features the Nestlé brand name in white on a red background, with the words "Cocœa Plan" in white on a brown background below it.

Nestlé  
Cocœa Plan

**ANNUAL**

**PROGRESS**

**REPORT**

**2021**



# WELCOME TO OUR

## 2021 PROGRESS REPORT

Detailing progress towards our ambition to source

# 100%

of our cocoa through the Nestlé Cocoa Plan by 2025



04  
ABOUT THE NESTLÉ COCOA PLAN

05  
OUR SOURCING ORIGINS

06  
**BETTER FARMING**

08  
**BETTER LIVES**

10  
**BETTER COCOA**

12  
**INCOME ACCELERATOR PROGRAM**

16  
2021 PERFORMANCE

21  
A COLLABORATIVE APPROACH

22  
FURTHER READING

# INTRODUCTION

**The Nestlé Cocoa Plan, launched in 2009, has delivered tangible impact. It is fully aligned to Nestlé’s overarching Net Zero Roadmap, Human Rights Framework and Roadmap, and Forest Positive strategy.**

**We are committed to sourcing 100% of our cocoa through the Nestlé Cocoa Plan by 2025.**

The Nestlé Cocoa Plan exists to help build a brighter future for cocoa-farming families and to produce great quality cocoa.

In 2021, we continued to grow both in terms of scale and impact – despite serious ongoing challenges from the COVID-19 pandemic.

One of the main focus areas in 2021 was living incomes for cocoa-farming families. We launched the pilot of our income accelerator program in Côte d’Ivoire, which aims to help both close the gap to a living income and protect children.

The decision to further scale this program was announced in early 2022. Our hope is that the income accelerator program will make a significant difference to cocoa-farming families while helping to support a just transition to regenerative agriculture in cocoa.

There were several other successes. In Ecuador, we became the first company in the world to achieve certification under the new 2020 Rainforest Alliance 2020 Sustainable Agriculture Standard. In West Africa, as outlined in

our Towards Forest Positive Cocoa report, we successfully mapped over 125 000 farms as part of our efforts to move to a deforestation-free supply chain for cocoa by 2025. We also distributed over a million forest and fruit trees to farmers during the year – bringing the total to over 2.2 million trees since 2018. In line with Nestlé’s broader Forest Positive strategy, we began to work at landscape level to restore two key forest areas in Côte d’Ivoire: Cavally, and Beki and Bossematie.

In total this year, we have trained over 90 000 farmers in good agricultural practices (GAPs). Our Child Labor Monitoring and Remediation System (CLMRS) has assisted 159 783 children since its launch in 2012 - with over 100 000 West African children covered by the system in 2021 alone. These achievements are a reflection of

the collaborative approach we have taken with our suppliers, governments and key partners on the ground, such as the Rainforest Alliance, as well as the co-operatives and cocoa-farming families themselves.

Looking ahead, the income accelerator program is a key focus for us and we will closely monitor performance as we scale this innovative program in Côte d’Ivoire. We will continue to expand the coverage of our CLMRS to help tackle child labor risks in Ghana. We will continue to work towards achieving a deforestation-free cocoa supply chain and to advance the development of regenerative agriculture in cocoa. In 2022 we intend to expand our Forest Positive projects to help protect and restore more forestland across Côte d’Ivoire.

# ABOUT THE NESTLÉ COCOA PLAN

Launched in 2009, the Nestlé Cocoa Plan aims to make Nestlé’s cocoa supply chain more sustainable across three pillars



**BETTER FARMING**

Providing training and resources to help farmers improve yields and quality, increasing income and improving livelihoods

**BETTER LIVES**

Aiming to tackle child labor risks, empowering women and improving access to quality education to help communities thrive

**BETTER COCOA**

Enhancing supply chain traceability, building long-term relationships with farmer groups and moving towards a forest-positive future

[nestlecocoaplan.com](http://nestlecocoaplan.com)

The data in this report is based on the 2021 calendar year

**9**

Countries covered by the Nestlé Cocoa Plan

**50.6%**

Of Nestlé cocoa is sourced through the Nestlé Cocoa Plan and certified by the Rainforest Alliance using a mass balance approach or verified by another third party

**152 236**

Cocoa-farming families in the Nestlé Cocoa Plan (+28 000 vs 2020)

**159 783**

Children have received support from the Nestlé Cocoa Plan Child Labor Monitoring and Remediation System (CLMRS) in Côte d’Ivoire and Ghana since 2012



**INCOME ACCELERATOR PROGRAM**

In January 2022, we announced a new plan to build on our longstanding efforts to tackle child labor risks in cocoa production.

At its center is an innovative income accelerator program, which aims to improve the livelihoods of cocoa-farming families and incentivize the enrollment of children in school, while advancing regenerative agriculture practices and gender equality.

More details are available in this report.

# OUR SOURCING

# ORIGINS

Where our 198 000 tonnes of Nestlé Cocoa Plan cocoa produced in 2021 comes from

MEXICO	ECUADOR	DOMINICAN REPUBLIC	VENEZUELA	BRAZIL	CÔTE D'IVOIRE	GHANA	CAMEROON	INDONESIA
1%	7%	1%	1%	6%	69%	8%	3%	4%

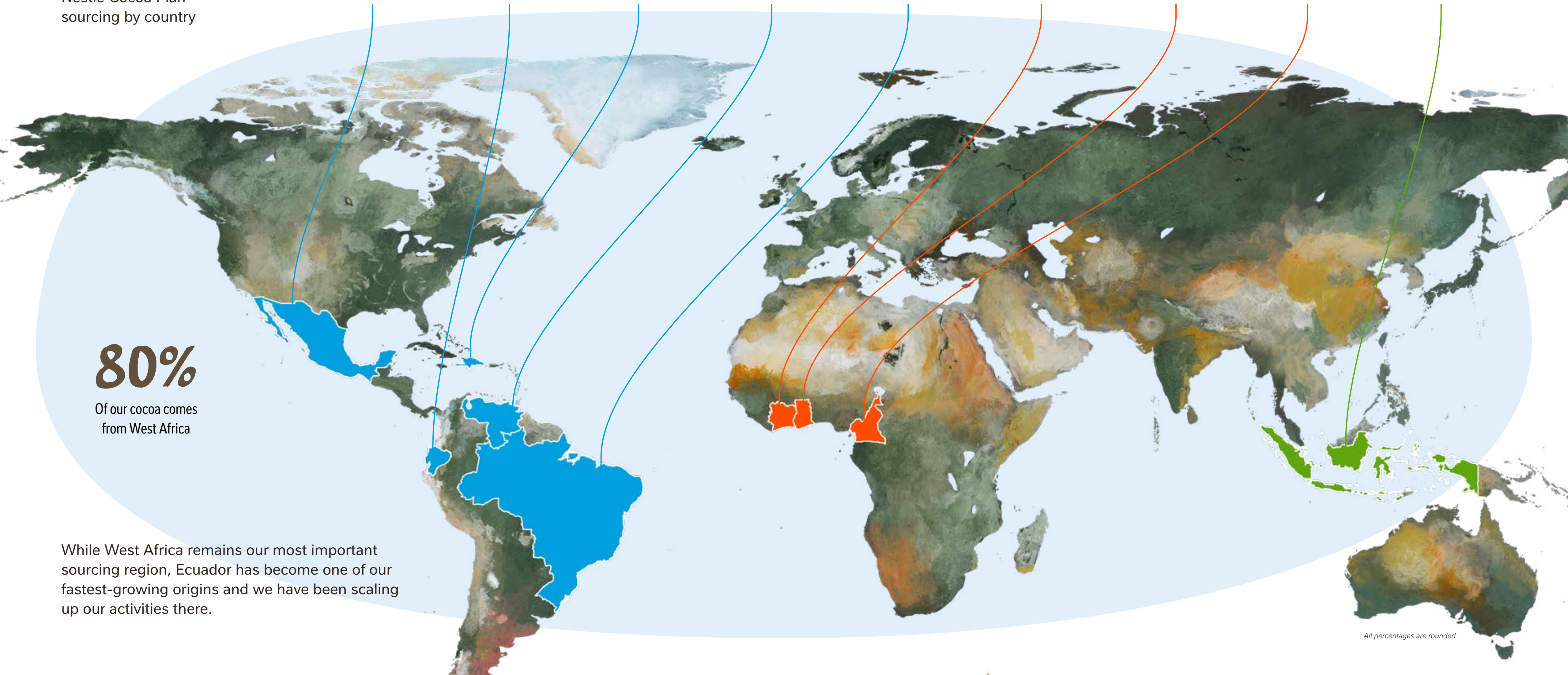
Nestlé Cocoa Plan sourcing by country

# 80%

Of our cocoa comes from West Africa

While West Africa remains our most important sourcing region, Ecuador has become one of our fastest-growing origins and we have been scaling up our activities there.

All percentages are rounded.



# BETTER FARMING

Providing training and resources to help farmers improve yields and quality, increasing income and improving livelihoods



We help farmers with training on five good agricultural practices (GAPs), i.e. more sustainable farming methods to increase yield and protect resilience. We also provide farmers with resources and encourage income diversification activities.

GAPs such as correct pruning and weeding help optimize cocoa yields and improve farmers' environmental footprint. They also have the potential to lift farmers' incomes and improve water management and biodiversity. This makes GAPs a fundamental part of the Nestlé Cocoa Plan.

In 2021 the number of farmers incorporating GAPs increased from 18% to 33%. This means that they adopted at least four of our recommended five GAPs, including pruning. It is worth bearing in mind that largely owing to COVID-19, the data sample sizes over the last three years have been different – making a direct comparison complex.

Uptake in GAPs should improve efficiency and yield on these farms over the medium term. The full data set across all five GAPs is available in the [2021 Performance](#) section.

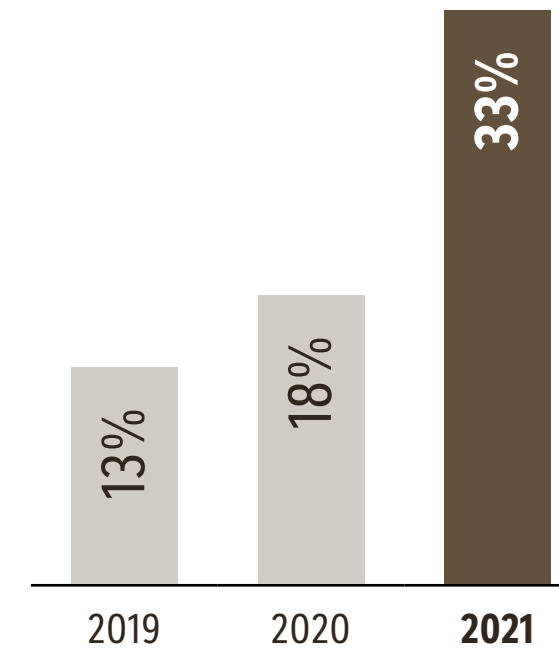
This data relates to the sample of farms surveyed in Côte d'Ivoire and Ghana. See pg. 17 for more information.

## Adopting good agricultural practices

### Overall adoption rate

We focus on promoting five GAPs: pruning, pest and disease control, weeding, shade management and harvest management.

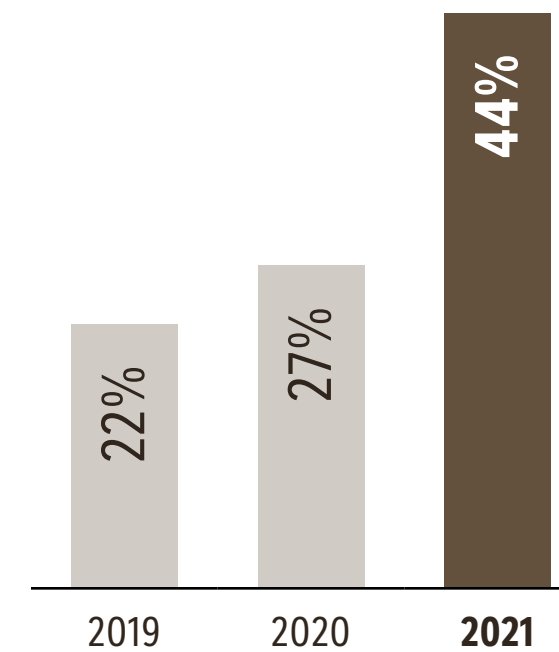
**% OF FARMERS CONSIDERED TO HAVE ADOPTED AT LEAST FOUR GAPs (INCLUDING PRUNING) TO A SATISFACTORY STANDARD - CÔTE D'IVOIRE**



### Pruning

Cutting back unproductive branches significantly boosts the tree's overall yield and reduces the risk of fungal diseases by improving airflow.

**% OF FARMERS ADOPTING PRUNING - CÔTE D'IVOIRE**



# 90 000+

farmers trained in good agricultural practices



# BETTER LIVES

Aiming to tackle child labor risks,  
empowering women and improving  
access to quality education to help  
communities thrive





**Tackling child labor risks is a critical part of a just transition to a fairer and more sustainable food system.**

In 2012, Nestlé and the International Cocoa Initiative (ICI) launched the Child Labor Monitoring and Remediation System (CLMRS) with the objective of tackling child labor risks. The system has since been adopted as the industry standard and we are happy that it is now broadly used. Helping provide children with access to quality education is central to our approach.

**THE CLMRS CONTINUED TO EXPAND IN SCALE IN 2021, DESPITE THE PRACTICAL DIFFICULTIES PRESENTED BY THE COVID-19 PANDEMIC.**

We strive to empower women in various ways, including our new income accelerator program (see page 14) and Village Savings and Loans Associations (VSLAs). VSLAs are organized at a community level and help provide basic financial services to cocoa-farming families, such as making cash deposits and obtaining credit. The Nestlé Cocoa Plan helps to set up these associations and ensures that women are represented in the management of them. This gives them a direct influence over how savings and loans are allocated to the community.

We also provide gender-based training, which helps husbands and wives to reflect together on their roles, responsibilities and decision-making.



**Tackling child labor risks**

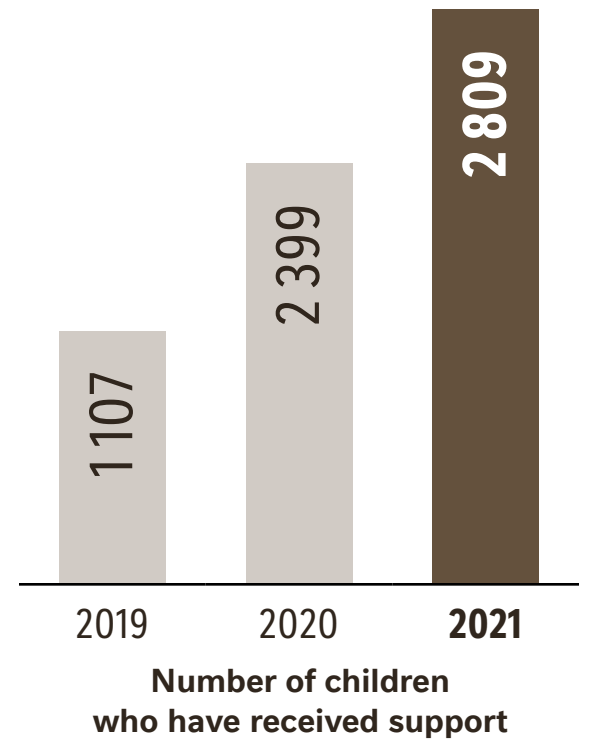
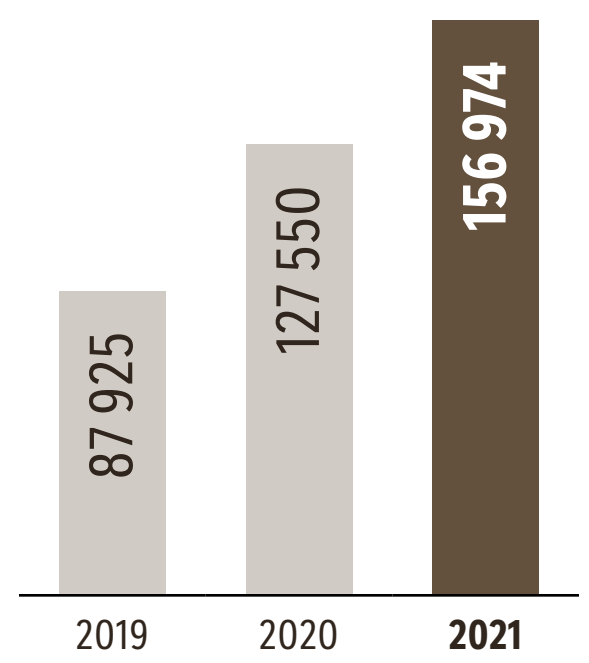
**CÔTE D'IVOIRE**

**GHANA**

**Children who have received support to reduce the risk of child labor (cumulative)**

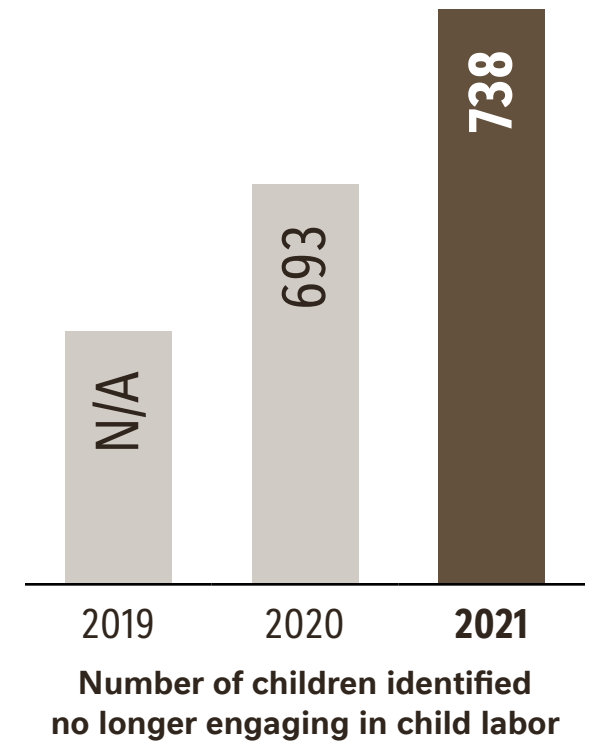
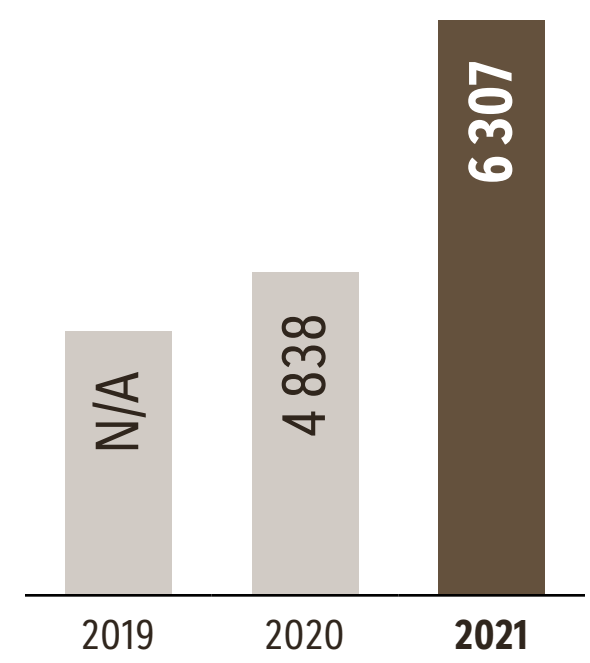
Support activities provide children with access to quality education and reduce the risk of them engaging in hazardous tasks. These include school building and refurbishment, school kits, bridge schools and vocational training.

[A full list is available here](#)



**Children no longer engaging in child labor**

Children are considered to be no longer in child labor if they are not engaged in hazardous tasks after two follow-up visits. As the CLMRS continues to rapidly expand, its effectiveness has also been increasing.



**55%**

of children previously identified in child labor who received support were no longer engaging in hazardous work at their last follow-up visit. (Source: ICI, Nestle CLMRS in Côte d'Ivoire, children aged 5-17)

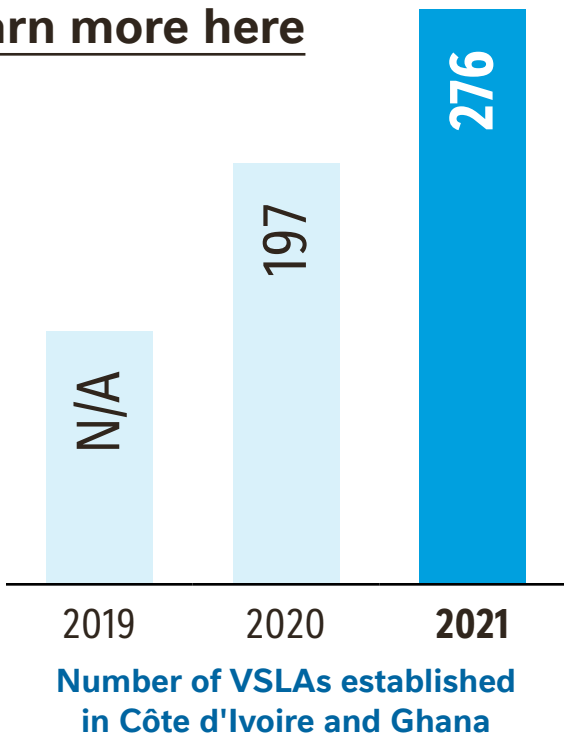
**Empowering women**

**Village Savings and Loans Associations (VSLAs)**

We ensure that women are involved in running the VSLAs that we help set up – giving them a say in the management of community finances.

When combined with the Gender Action Learning System (GALS), VSLAs can help advance gender empowerment through financial inclusion and literacy.

[Learn more here](#)



# BETTER COCOA

Enhancing supply chain traceability,  
building long-term relationships  
with farmer groups and moving  
towards a forest-positive future



**Expanding the Nestlé Cocoa Plan is critical to our aim of achieving 100% sustainable cocoa by 2025.**

The percentage of Nestlé’s total cocoa sourced through the Nestlé Cocoa Plan continued to increase in 2021, accounting for half of the total volume for the first time. The total volume of cocoa bought through the Nestlé Cocoa Plan fell in line with a drop in the total bought by Nestlé.

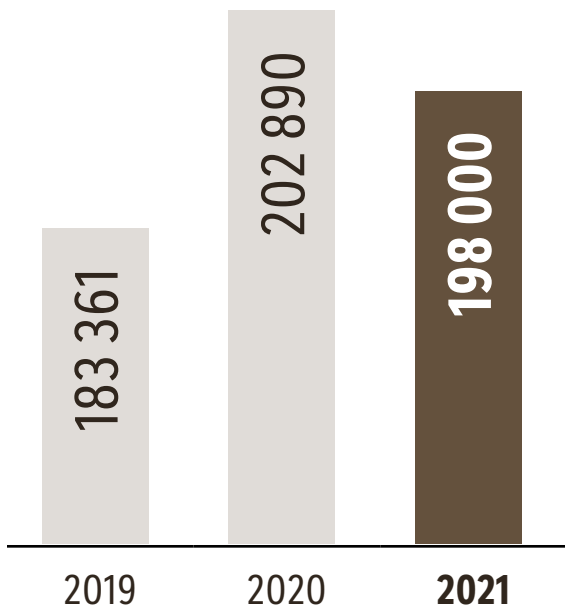
The Nestlé Cocoa Plan also expanded in scale – including another 29 co-operatives and around 23 000 additional cocoa-farming families in Côte d'Ivoire. Our growth trajectory will accelerate, putting us on track for our 2025 goal.

Across the whole of Nestlé in 2021, our responsible sourcing KPI was updated to a more ambitious ‘produced sustainably’ KPI. Produced sustainably means the origin of the key ingredient is known and the direct supplier is progressing to address social and environmental performance. Cocoa is one of 14 key ingredients across Nestlé to which the new KPI will apply. See the [Nestlé Creating Shared Value and Sustainability Report 2021](#) (page 40-41) for further information.

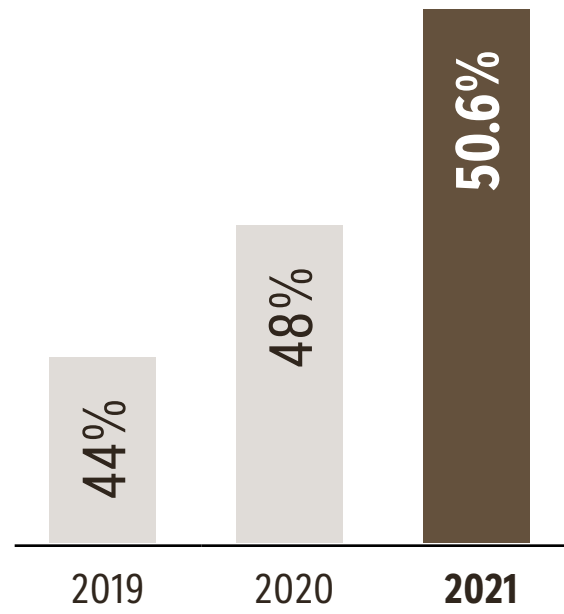
Rainforest Alliance released their new 2020 Sustainable Agriculture Standard, which we have quickly embraced and begun to implement around the world (e.g. in Ecuador). The new standard aims to place greater emphasis on continuous improvement and to be more contextualized, as well as encouraging more dialogue across the supply chain and gradually improving data quality.

## Nestlé Cocoa Plan scale

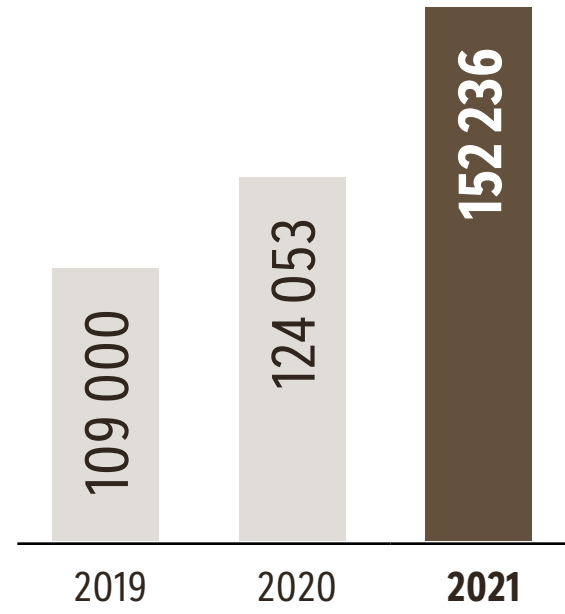
**TONNES OF COCOA SOURCED VIA THE NESTLÉ COCOA PLAN**



**NESTLÉ COCOA PLAN COCOA AS A % OF TOTAL NESTLÉ COCOA**



**NUMBER OF COCOA-FARMING FAMILIES IN THE NESTLÉ COCOA PLAN**



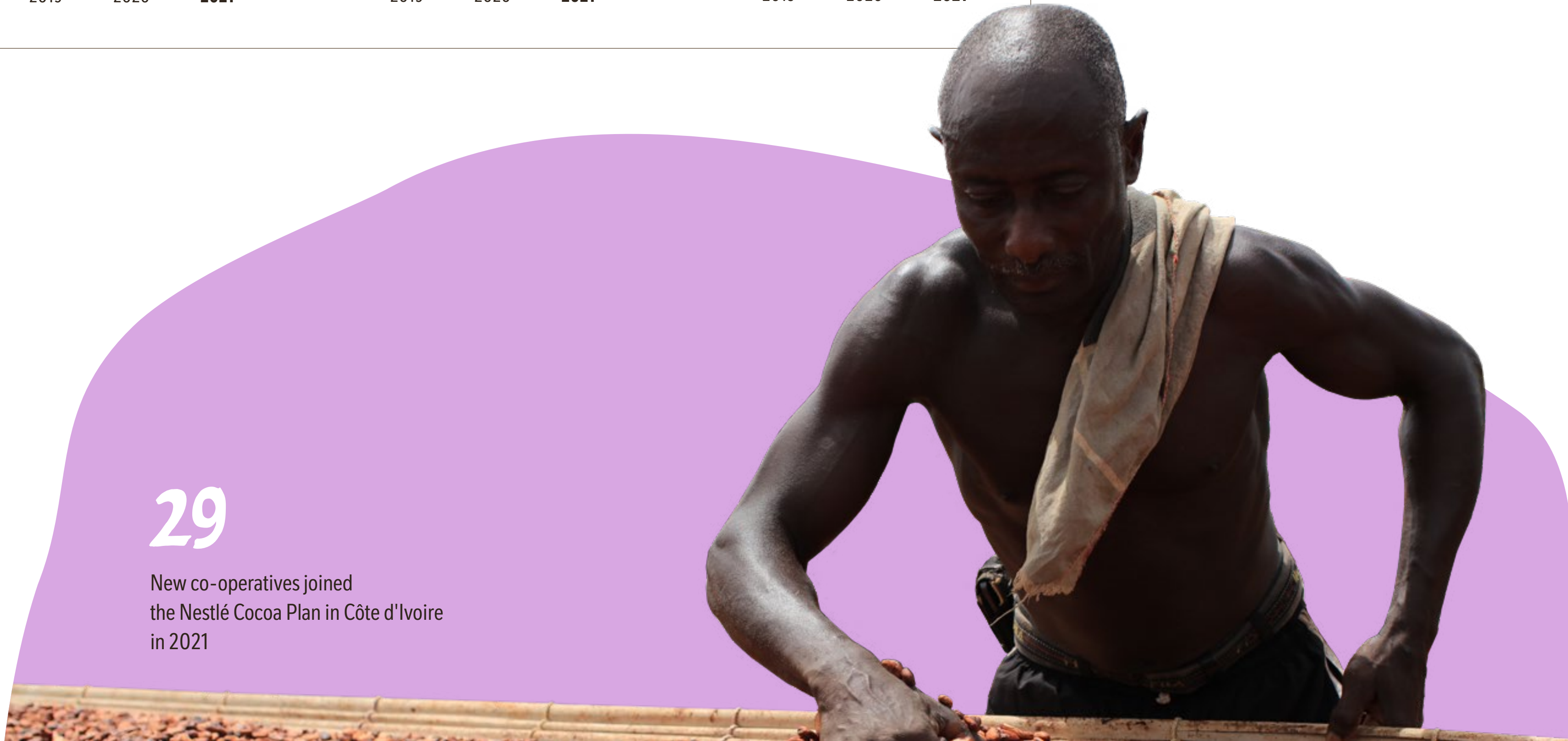
## Towards Forest Positive

# 2.25 MILLION

Multi-purpose trees distributed (cumulative 2018-2021)

We made notable progress towards our Forest Positive strategy, mapping 125 000 farms across Côte d'Ivoire and Ghana and distributing over a million forest and fruit trees in 2021.

Full details are available in our [Towards Forest Positive Cocoa Report](#).



# 29

New co-operatives joined the Nestlé Cocoa Plan in Côte d'Ivoire in 2021

This data relates to the sample of farms surveyed in Côte d'Ivoire and Ghana. See pg. 17 for more information.



# INCOME ACCELERATOR PROGRAM

Aiming to improve the livelihoods of cocoa-farming families and incentivize the enrollment of children in school, while advancing regenerative agriculture practices and gender equality

# INCOME ACCELERATOR PROGRAM

**An innovative program to help tackle child labor risks and improve cocoa-farming families' incomes is set to expand following a successful two-year pilot.**

Over the last 10 years, the Nestlé Cocoa Plan has worked to help cocoa farmers improve productivity, support income diversification, economically empower women and establish basic community-led financial services in rural areas. Building on this work, in 2020 we launched an innovative income accelerator program pilot.

### A successful pilot

The pilot featured 1 000 cocoa-farming families in Côte d'Ivoire in 2020/21. At its center was a financial incentive for:

- School enrollment
- Good agricultural practices (GAPs) (see pg. 7)
- Agroforestry activities
- Diversifying incomes
- A bonus for completing all four of the above

Therefore, the program rewards practices that help to protect children, increase crop productivity and aim to secure additional sources of income for cocoa-farming families.

Importantly, we didn't just incentivize these behaviors – we enabled them. For example, we provided forest and fruit trees to farmers to promote agroforestry, we trained and subsidized pruning groups to help farmers adopt GAPs and we supported families to grow other crops or raise livestock to help diversify incomes.

### Improving finances and empowering women

An innovative aspect of the program is the fact that we used mobile banking technology to deliver money straight to cocoa-farming families. We also recognized the important role that women play as agents of change – both on the farm and in the family, so we paid 50% of the incentive to the spouse.

### An opportunity for change

To implement the income accelerator program pilot we worked closely with several partners:

- KIT Royal Tropical Institute – measured progress and assessed the program's impact
- The Rainforest Alliance – verified that the criteria were met
- International Cocoa Initiative (ICI) – verified that children were attending school and that their parents were covered by a CLMRS
- IDH – The Sustainable Trade Initiative – ensured strong governance

Building on the pilot, in January 2022 we announced that we will begin testing the program at scale.

We will continue working with our partners as we roll the program out to an expected 10 000 families in Côte d'Ivoire until the end of 2023. Should this prove successful, based on the learnings we obtain, we will expand the program where relevant globally. We estimate this will encompass around 160 000 cocoa-farming families.

As part of the program, we will transform our global sourcing to achieve full traceability and segregation of our cocoa from origin to factory – driving transparency across the industry.

As we expand the program, the Rainforest Alliance will be working with ICI and KIT Royal Tropical Institute to study its impact. A group of 2 000 farmers will be studied, comparing those who receive the traditional Nestlé Cocoa Plan support against those who are also in the income accelerator program. This will allow us to better understand the medium- to long-term effectiveness of the program.

## Income accelerator: scale-up

2020	2022	2024	2030
<b>1 000</b> families	<b>10 000</b> families		<b>160 000</b> families*
<b>Côte d'Ivoire</b> > Pilot	> Test at scale	> Scale up	
		<b>Ghana</b> > Extension	
		<b>Global</b> > Rollout	

\* Estimation

**“Our efforts over many years have helped, but more is needed. We are scaling up a holistic approach to getting kids in school, accelerating farmer income and supporting families.”**

MARK SCHNEIDER, Nestlé CEO

[Read more here](#)

# Incentivizing sustainability

An interview with Darrell High



**DARRELL HIGH,**  
Head of the Nestlé Cocoa Plan

*"I believe the income accelerator program has the potential to close the gap to a living income – perhaps even completely."*

"We launched the income accelerator program to really tackle the root causes of child labor risks head-on. Our Child Labor Monitoring and Remediation System (CLMRS) was an industry first and so far, it has given us unprecedented information about what the problems are and it has enabled a lot of kids to get back into education – but there were always other children that needed a different kind of help. What about them?"

There are many reasons why child labor risk is so prevalent in certain regions, but ultimately it often comes down to poverty. The truth is, to tackle child labor risks in the long term, we need to address complex systemic issues. Poverty is chief among them, and the program is designed to help tackle it directly.

The program provides both the incentive and support to make crucial changes – through training and capacity building. Pruning is one example of where a little can change a lot. We know that with correct pruning, farmers can get much more cocoa from their trees – but farmers are often reluctant. We have tried to remove all the obstacles farmers faced – we provided training, equipment and subsidized pruning groups to do the task. When we added the incentive to these activities in the pilot we saw the uptake of pruning leap from around 18% to 80% within that group of farmers.

This bodes extremely well because it will impact not just productivity but also reduce crop diseases and minimize the need for chemical controls – helping the transition to regenerative agriculture.

The income accelerator program also aims to challenge the status quo on gender equality.

In many families, men make the decisions and manage the money, which results in unequal access to finances. Yet, the women often work on the farm and children rely on the female parent for nutrition, access to schooling, and other critical resources. By giving 50% of the incentive to the farmer's spouse, we are making both a symbolic and practical change. And by delivering it via mobile banking technology we can ensure it ends up directly in the hands of the family.

I believe the program has the potential to close the gap to a living income – perhaps even completely. It aims to make progress in gender equality because we want to empower the whole household – now, and for generations to come. We need to see the producers of our cocoa not simply as farmers but as caregivers, as earners and providers, and as community members, otherwise, we can't create any lasting change."

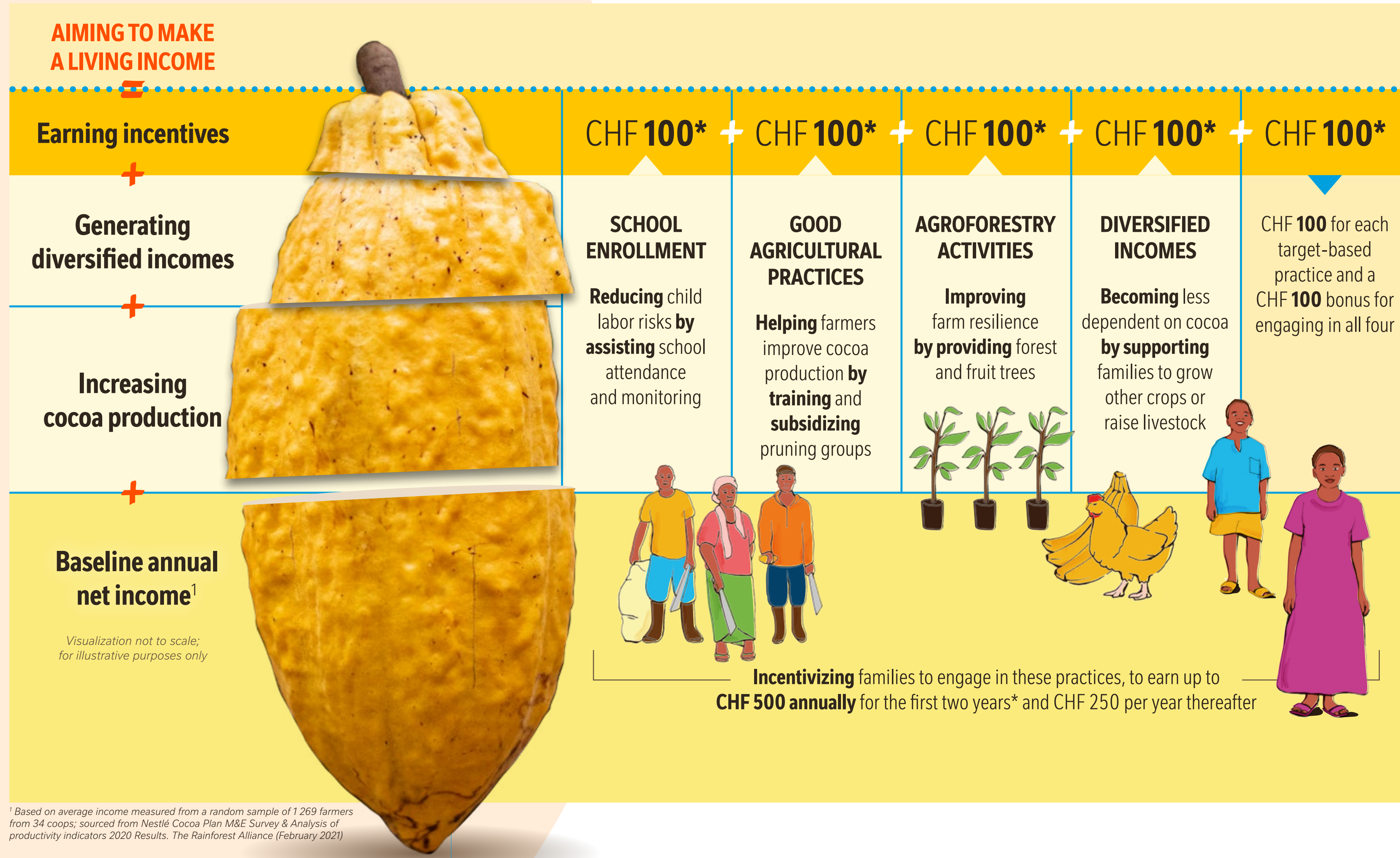
# EARNING INCENTIVES

The income accelerator program aims to bridge the gap to a living income. The incentive is an enabler to accelerate change by rewarding cocoa-farming families not just for the quantity and quality of their cocoa beans, but also for practices that benefit the environment and local community.

During the first two years, cocoa-farming families can earn up to CHF 500 in direct bonus payments annually by taking part in the program. Families are set targets in the four areas of school enrollment, good agricultural practices, agroforestry activities and diversified incomes.

A CHF 100 incentive is rewarded for each target reached, with a bonus of CHF 100 for any family achieving all four targets. As families' incomes increase from additional sources and better yields, the cash incentive is reduced to CHF 250 per year.

The incentive is delivered directly to households using mobile banking technology with a 50/50 split between the farmer and his spouse retained (as per the pilot).



<sup>1</sup> Based on average income measured from a random sample of 1 269 farmers from 34 coops; sourced from Nestlé Cocoa Plan M&E Survey & Analysis of productivity indicators 2020 Results. The Rainforest Alliance (February 2021)

# 2021 PERFORMANCE

Tracking our  
evolution against our key  
performance indicators





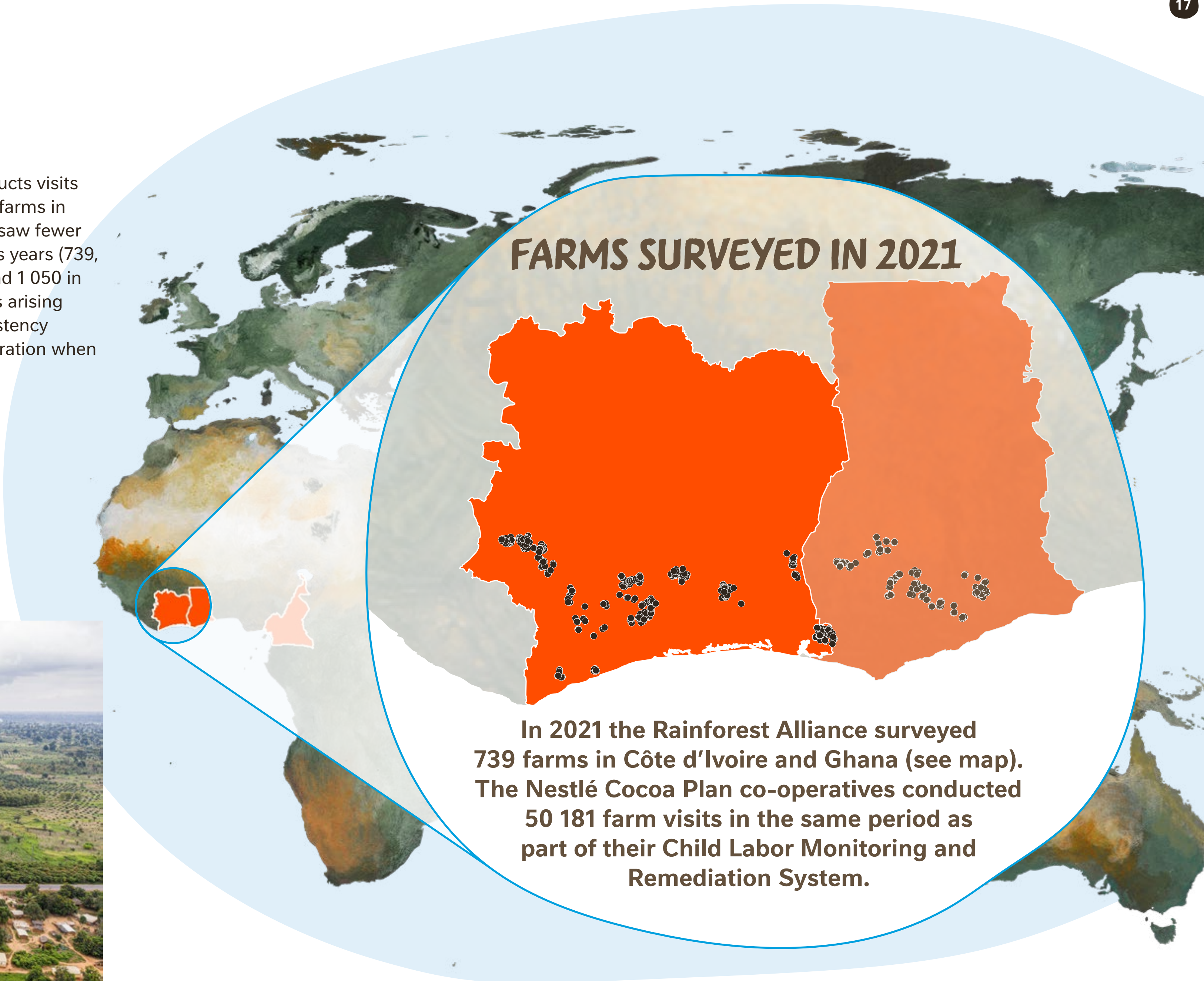
# ABOUT OUR DATA

The data presented in this report is from the calendar year January 1 – December 31, 2021. Our KPIs are presented across the Nestlé Cocoa Plan’s three strategy pillars: Better Farming, Better Lives and Better Cocoa.

Most of our data is collected by third parties – notably [the Rainforest Alliance](#) and the [International Cocoa Initiative \(ICI\)](#).

The Rainforest Alliance collects much of our data on farming, good agricultural practices, and cocoa production. The International Cocoa Initiative meanwhile, gathers all data from our Child Labor Monitoring and Remediation System.

The Rainforest Alliance conducts visits in a randomized selection of farms in the Nestlé Cocoa Plan. 2021 saw fewer farm surveys than in previous years (739, compared to 1 011 in 2020 and 1 050 in 2019) owing to complications arising from COVID-19. This inconsistency should be taken into consideration when noting trends in the data.



**In 2021 the Rainforest Alliance surveyed 739 farms in Côte d'Ivoire and Ghana (see map). The Nestlé Cocoa Plan co-operatives conducted 50 181 farm visits in the same period as part of their Child Labor Monitoring and Remediation System.**

Better Farming	2019	2020	2021	Data source
Farmers trained in GAPs - Côte d'Ivoire	68 965	55 877	73 402	Forest Positive report 2022
Farmers trained in GAPs - Ghana	17 641	18 137	18 258	Forest Positive report 2022
<b>Adoption of GAPs in Côte d'Ivoire</b>				
Pruning	22%	27%	44%	Rainforest Alliance data
Pest & disease control	86%	86%	71%	Rainforest Alliance data
Weeding	48%	54%	62%	Rainforest Alliance data
Shade management	40%	40%	58%	Rainforest Alliance data
Harvest management	77%	62%	62%	Rainforest Alliance data
Percentage of farmers considered to have adopted at least four GAPs to a satisfactory standard	13%	18%	33%	Rainforest Alliance data
<b>Adoption of GAPs in Ghana</b>				
Pruning	N/A	N/A	55%	Rainforest Alliance data
Pest & disease control	N/A	N/A	77%	Rainforest Alliance data
Weeding	N/A	N/A	52%	Rainforest Alliance data
Shade management	N/A	N/A	54%	Rainforest Alliance data
Harvest management	N/A	N/A	71%	Rainforest Alliance data
Percentage of farmers considered to have adopted at least four GAPs to a satisfactory standard	N/A	N/A	42%	Rainforest Alliance data
<b>Forest positive practices</b>				
Number of farms mapped in Côte d'Ivoire	72 784	75 820	85 892	Forest positive report 2022 and Tackling Deforestation report
Number of farms mapped in Ghana	14 799	14 797	18 162	Forest Positive report 2022 and Tackling Deforestation report
Awareness-raising sessions in Côte d'Ivoire	N/A	N/A	32 392	Forest Positive report 2022
Awareness-raising sessions in Ghana	N/A	N/A	681	Forest Positive report 2022
Forest and fruit trees distributed globally	42 1054	669 305	1 038 904	Nestlé CSV Report 2021
Shade tree density (trees per hectare) in Côte d'Ivoire	N/A	10	7	Rainforest Alliance data
Shade tree density (trees per hectare) Ghana	N/A	N/A	8	Rainforest Alliance data
Number of hectares protected/restored				Forest Positive report

**Note: N/A means the data was not yet available.**

Better Lives	2019	2020	2021	Data source
<b>Remediation by type in Côte d'Ivoire</b>				
Schools built or refurbished	4	4	0	International Cocoa Initiative data
School kits	4 174	9 501	15 673	International Cocoa Initiative data
Birth certificates	187	521	98	International Cocoa Initiative data
Extra tuition	136	13	1 028	International Cocoa Initiative data
Bridging classes	122	2 100	2 466	International Cocoa Initiative data
Vocational training	1	0	14	International Cocoa Initiative data
Wheelbarrows	1 304	9	1 083	International Cocoa Initiative data
<b>Remediation by type in Ghana</b>				
School kits	644	674	226	International Cocoa Initiative data
Birth certificates	0	0	153	International Cocoa Initiative data
Vocational training	22	2	1	International Cocoa Initiative data
<b>Tackling child labor risks in Côte d'Ivoire</b>				
Households covered by CLMRS to prevent and address child labor risks in Côte d'Ivoire	N/A	57 525	69 318	Nestlé CSV report & International Cocoa Initiative data
Children covered by CLMRS to prevent and address child labor risks in Côte d'Ivoire	78 268	86 134	94 748	Nestlé CSV report
Number of children identified who reported no longer engaging in child labor at the two most recent follow-up visits in Côte d'Ivoire	7 981	4 838	6 307	Nestlé CSV report & International Cocoa Initiative data
<i>Total number of children who received support in Côte d'Ivoire (cumulative)*</i>	<i>87 925</i>	<i>127 550</i>	<i>156 974</i>	<i>Nestlé CSV report &amp; International Cocoa Initiative data</i>
<b>Tackling child labor risks in Ghana</b>				
Households covered by CLMRS to prevent and address child labor risks in Ghana	2 309	1 897	10 711	Nestlé CSV report & International Cocoa Initiative data
Children covered by CLMRS to prevent and address child labor risks in Ghana	2 399	2 325	5 978	Nestlé CSV report & International Cocoa Initiative data
Number of children identified who reported no longer engaging in child labor at the two most recent follow-up visits in Ghana		693	738	Nestlé CSV report
<i>Total number of children who received support in Ghana (cumulative)*</i>	<i>1 107</i>	<i>2 399</i>	<i>2 809</i>	<i>Nestlé CSV report</i>
<b>VSLAs</b>				
# VSLAs established in Côte d'Ivoire	N/A	193	271	International Cocoa Initiative data
# VSLAs established in Ghana	0	4	5	International Cocoa Initiative data

**Note: N/A means the data was not yet available.**

*\*Includes prevention activities such as awareness-raising sessions.*

Better Cocoa	2019	2020	2021	Data source
Tonnes of cocoa sourced annually through the Nestlé Cocoa Plan	183 361	202 890	198 000	Nestlé CSV report
Nestlé Cocoa Plan cocoa as a % of total Nestlé cocoa	44%	48%	50.6%	Nestlé CSV report
Number of coops in Côte d'Ivoire	87	83	96	International Cocoa Initiative data
Number of districts in Ghana	1	1	4	International Cocoa Initiative data
Number of cocoa-farming families in the Nestlé Cocoa Plan	109 000	124 053	152 236	Nestlé CSV report
Average yield Nestlé Cocoa Plan farm in Côte d'Ivoire (kg/HA)	578	620	635	Rainforest Alliance data
Average yield Nestlé Cocoa Plan farm in Ghana (kg/HA)	N/A	N/A	464	Rainforest Alliance data
Average plot size Nestlé Cocoa Plan farm in Côte d'Ivoire (hectares)	3.2	3.6	4.2	Rainforest Alliance data
Average plot size Nestlé Cocoa Plan farm in Ghana (hectares)	N/A	N/A	3.3	Rainforest Alliance data
% income derived from cocoa in Côte d'Ivoire	N/A	84%	87%	Rainforest Alliance data
% income derived from cocoa in Ghana	N/A	N/A	76%	Rainforest Alliance data

Sourcing from the Nestlé Cocoa Plan	2019	2020	2021	Data source
Mexico	1%	2%	0.9%	Origin of Nestlé Cocoa Plan 2021
Ecuador	11%	9%	7.4%	Origin of Nestlé Cocoa Plan 2021
Venezuela	0%	0%	0.5%	Origin of Nestlé Cocoa Plan 2021
Brazil	3%	4%	5.6%	Origin of Nestlé Cocoa Plan 2021
Côte d'Ivoire	73%	72%	69.5%	Origin of Nestlé Cocoa Plan 2021
Ghana	8%	8%	8.4%	Origin of Nestlé Cocoa Plan 2021
Cameroon	1%	1%	2.7%	Origin of Nestlé Cocoa Plan 2021
Indonesia	3%	4%	4.2%	Origin of Nestlé Cocoa Plan 2021
Dominican Republic	0%	0%	0.7%	Origin of Nestlé Cocoa Plan 2021

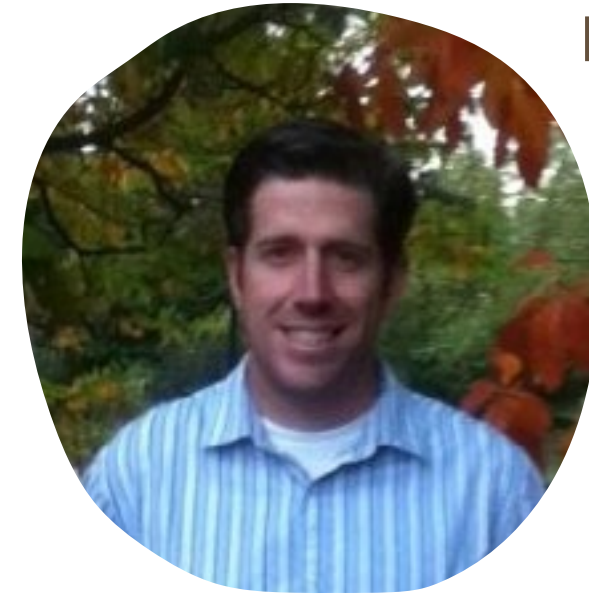
**Note: N/A means the data was not yet available.**

# A COLLABORATIVE

# APPROACH

The Nestlé Cocoa Plan works with a number of partner organizations. These include suppliers, local authorities, national government agencies and non-governmental organizations, as well as co-operatives and cocoa-farming families. Our partners are crucial to our success. The systemic challenges we face are too large for any single organization to surmount alone.

**"The Rainforest Alliance has been working with Nestlé since the beginning of the Nestlé Cocoa Plan – initially through the UTZ certification program. Certification remains an important sustainability tool, but we also partner with Nestlé beyond that. We provide data and analysis on topics like agricultural practices, agroforestry, and incomes. The Nestlé Cocoa Plan makes a lot of effort to support cocoa-farming families, so we need to see what works and what doesn't. In another project, we help co-operatives create management plans for agroforestry; we've also supported Nestlé and partners in protecting and restoring a major wildlife corridor in southeastern Côte d'Ivoire, home to critically endangered forest elephants. I believe in the power of this partnership. Together we are making a tangible difference on the ground."**



**MATTHEW BARE,**  
Markets Innovation Lead, The Rainforest Alliance



### The Rainforest Alliance

The Nestlé Cocoa Plan works with the Rainforest Alliance as a certification and strategic partner. Moving to a single main certifier creates more synergies, allows for more cross-collaboration and builds more value. The Rainforest Alliance supports us to monitor and evaluate the Nestlé Cocoa Plan (including the income accelerator program) and identify performance, progress, and the additional needs of cocoa-farming families. Together, we are also collaborating on one of Nestlé's first Forest Positive projects – restoring the Beki and Bossematie forests in eastern Côte d'Ivoire.

[Learn more here](#)



### International Cocoa Initiative

Nestlé was a founding member of the International Cocoa Initiative (ICI). Created specifically to help tackle the issue of child labor, ICI works with us on the ground in Côte d'Ivoire and Ghana to help us implement our industry-leading Child Labor Monitoring and Remediation System (CLMRS). The approach was jointly developed and it swiftly became the industry standard.



### Jacobs Foundation

Jacobs Foundation is one of the world's leading foundations for the development of children and young people. They are our main education partner. Since 2016 our program with them has established more than 50 bridging classes and reached almost 2 000 children.



### Earthworm

The Nestlé Cocoa Plan is working closely with Earthworm Foundation to protect and restore the Cavally Forest in Côte d'Ivoire.



### KIT Royal Tropical Institute

We partner with Amsterdam-based KIT, an independent center of expertise in sustainable development, for evaluating the impact of our income accelerator program.

### Governments

We cooperate closely with national and local governments, as well as government agencies. In Côte d'Ivoire for example, we work with public bodies such as the Ministère des Eaux et Forêts (MINEF) and Société de développement des Forêts (SODEFOR). Collaboration often extends into key sustainability projects such as education or forest protection and restoration. Our participation in the Cocoa and Forests Initiative in Côte d'Ivoire and Ghana is an example of this.

### Cocoa partners

Our suppliers manage the critical task of getting the cocoa from the field to our factories. They are very much partners in the implementation of our sustainability activities, and they are supported by the Nestlé Cocoa Plan team.

# FURTHER READING

For more information on sustainability at Nestlé and the Nestlé Cocoa Plan, please see our other recent publications:



Nestlé Cocoa Plan Progress Report 2020



Towards Forest Positive Cocoa Annual Progress Report 2022



Nestlé Creating Shared Value and Sustainability Report 2021



Nestlé Net Zero Roadmap



Nestlé Forest Positive Strategy



Nestlé's Human Rights Framework and Roadmap



[nestlecocoaplan.com](http://nestlecocoaplan.com)



[nestle.com](http://nestle.com)